

Edge Himmel Park
Administrator's Report
December 17th, 2024

Current Enrollment

Himmel Park: 85

- 3 withdrawals since last month due to 10 consecutive absences
- 2 new students have started since last month
- 6 students scheduled to start between now and beginning of January
- 1 student at risk of being withdrawn for 10 consecutive absences

Northwest: 64

- 1 student at risk of being withdrawn for 10 consecutive absences
- 2 students scheduled to start in January

Total: 149

*The FY25 Budget is written with an Average Daily Membership (ADM) of 170

Enrollment and Recruitment Efforts

- Winter Session Printmaking Art Class scheduled at Himmel Park/Students are encouraged to bring a friend.
- Tabling event at Truly Nolen's Car show.
- Email and newsletter campaign gear towards traditional district school's counseling department as well as other non-profits that support marginalized youth
- Revised our student referral flyer to distribute to students the last week of summer school to encourage them to refer their family and friends.
- Working with a videographer to film student testimonials for Edge's website
- SunTran Bus stop ads through September
- Edge flyers posted at Lapan College & Career Club
- Edge flyers posted at Live Theatre Workshop
- Edge flyers available at Stand Up For Kids Tucson
- Edge flyers posted at Sporting Chance
- Edge flyers and print materials posted at 4 Boys & Girls Clubhouses
- Edge flyers and print materials are available at EON Youth Lounge on 4th Avenue, operated by Southern Arizona AIDS Foundation.

- Digital ads on Facebook, Instagram, and Google
- Edge flyers and print materials are available at El Rio Community Health Centers.
- Edge flyers are available at Himmel Park and Woods Libraries

Graduation Updates

Edge's Commencement Ceremony is scheduled for Thursday, May 22nd at the Leo Rich Theater at the Tucson Convention Center. Last week, Northwest celebrated their first graduation of this school year. Himmel Park two more students expected to graduate this week, bringing its total number of graduates this school year to six. Both Edge Northwest and Edge Himmel Park are expecting larger graduating classes compared to the prior school year.

New Community Partnerships

This year Edge has forged a partnership with COPE Community Services. Both Edge campuses now benefit from having COPE therapists at each campus two days per month. This partnership is intended to:

- Destigmatize seeking mental health supports
- Expedite the intake process for enrolling in services at COPE
- Teach brief coping skills through small group work

COPE is one of Edge's four behavioral health community partners. We have been referring students to COPE for several years now. It's not uncommon for adults or youth to wait up to three to four months to be connected to an individual therapist due to the demand of mental health support. COPE has distinguished itself by providing weekly case management and weekly support groups for youth, in addition to individualized therapy.

Beginning in January of 2025, Edge Himmel Park is beginning a collaboration with Washington Federal Bank. They will be teaching a Financial Literacy course to students on Wednesdays during the 3rd quarter. Topics will include: Savings, Insurance, Retirement, Taxes, Borrowing and Credit, Housing, Investing, Owning a business, and Budgeting.

Update On School Improvement Grant

ADE has still not responded to schools with any explanation as to why school improvement grants were cut. They have, however, articulated they will be awarding mini grants likely beginning in January. We don't anticipate these mini grants resulting in more than \$25,000 in additional funding for the district.

Subsequent Budget Related Action Steps Given The Following:

- A. Below Anticipated Enrollment**
- B. School Improvement Grant Debacle.**

Given enrollment concerns and news from ADE regarding school improvement grants numerous budgetary actions are necessary for the remainder of the fiscal year and aid in next fiscal year's budget. It's important to note that enrollment concerns all reside at Edge Himmel Park where enrollment is 20 students below what we had hoped for. Northwest Edge is maintaining full enrollment.

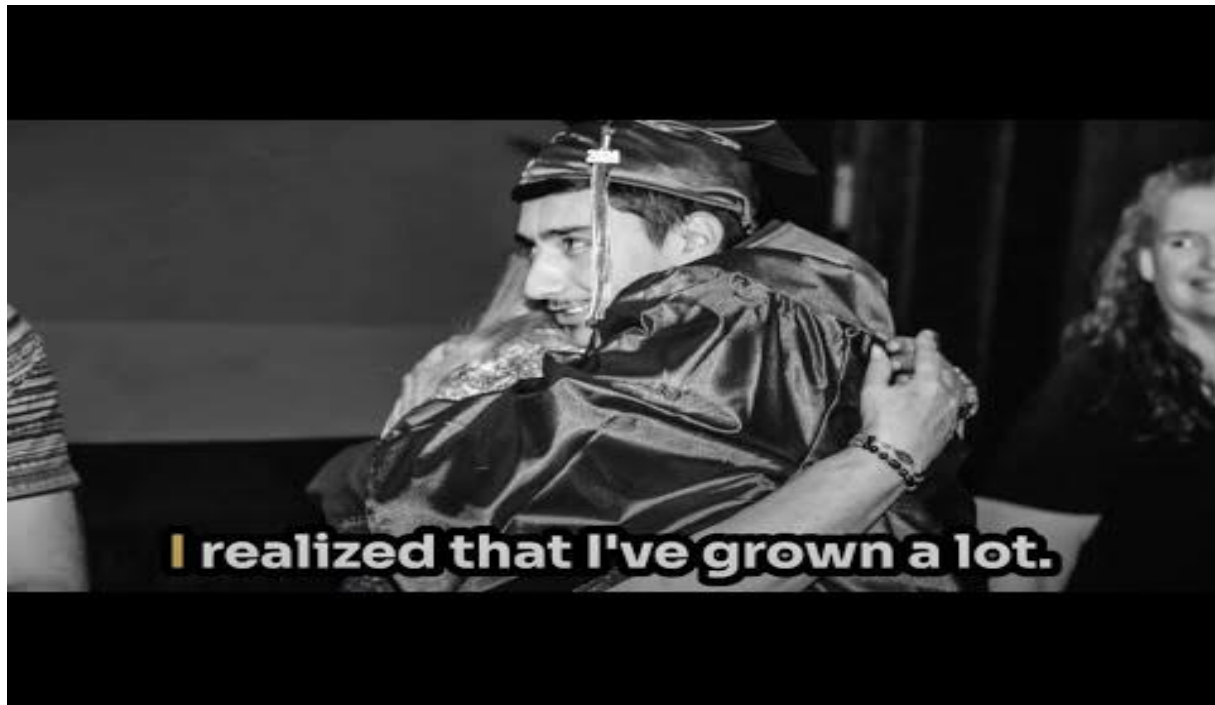
Two teaching assistant positions were cut at Edge Himmel Park. Classroom site payment to instructional staff on the June payment will likely need to be cut from \$3,000 to \$1,000 as Classroom Site Revenue is directly impacted by enrollment. Similarly, all three Edge administrators will take a pay cut in equal amount to the classroom site cut to instructional staff.

Last week Rob and Anne met with the staff at each campus to discuss the above-mentioned actions. While staff understood the need to move forward with the action items, understanding a decision does not make the impact better.

We will act with heightened urgency to find local foundation grants to apply for and are diligently scheduling face time with donors.

Upcoming Ways To Support Edge

- If you learn about grant opportunities, please let Edge administration know.
- If you have people in your personal or professional networks who might connect with Edge's mission and vision and might have the capacity to give, please make an introduction.
- Forward the video below to those in your network:
<https://www.youtube.com/watch?v=FAXaKI5Xx3U>



- Participate in a virtual meeting with Edge leadership and Grow Schools to better understand Edge's digital marketing efforts (Meetings held every Tuesday at 1PM).
- Enjoy a free improv theater show, starring Edge students and facilitated by our non-profit community partner, Live Theatre Workshop from 10:57AM-12:17PM on Wednesday, December 18th.
- Attend our staff holiday party on Wednesday, December 18th from 1:30-3:30 at La Indita Restaurant located at 722 N. Stone Ave.
- Engage with students while serving Hot Cocoa to students on Thursday, December 19th from 8AM-9:30AM at Himmel Park or from 9AM-Noon at Edge Northwest.
- Interact with Himmel Park students during Edge's Winter Wonderland activities from 11:15AM-12:38PM. Students and staff will engage in trivia, board games, volleyball, crafts, and the world's best cake walk!
- Participate in professional learning with our staff and/or eat lunch with staff on our Professional Learning Day on Monday, January 6th from 8AM-3PM at Edge Northwest.