

**Edge Himmel Park**  
**Administrator's Report**  
**March 11<sup>th</sup>, 2025**

**Current Enrollment**

Himmel Park: 68

- 3 new students have started since last month
- 2 students scheduled to start this week
- 3 students at risk of being withdrawn for 10 consecutive absences
- 7 withdrawals and 1 graduate since last month

Northwest: 58

Total: 126

\*The FY25 Budget is written with an Average Daily Membership (ADM) of 170

**Enrollment and Recruitment Efforts**

- **Pre-registration for next year underway for current Edge students**
- **Actively encouraging current students to refer their friends and family**
- **Open Houses scheduled for the first Tuesday of every month from 5PM-7PM at Edge Himmel Park**
- **Piloting a new structure of greater support and accountability regarding distance learning the 4<sup>th</sup> quarter.**
- **Proactively engaging middle schools, especially K-8 charter schools.**
- **Email and newsletter campaign geared towards traditional district school's counseling department as well as other non-profits that support marginalized youth**
- Edge flyers posted at Lapan College & Career Club
- Edge flyers posted at Live Theatre Workshop
- Edge flyers available at Stand Up For Kids Tucson
- Edge flyers posted at Sporting Chance
- Edge flyers and print materials posted at 4 Boys & Girls Clubhouses
- Edge flyers and print materials are available at EON Youth Lounge on 4th Avenue, operated by Southern Arizona AIDS Foundation.
  
- Edge flyers and print materials are available at El Rio Community Health Centers.

- Edge flyers are available at Himmel Park and Woods Libraries

### **Arizona Department of Education Site Visit**

On Friday, February 28<sup>th</sup>, Ken Rausch, Support & Innovation Specialist with the Arizona Department of Education visited both Edge Himmel Park and Edge Northwest. The visit was the second of four total visits that will occur before the end of the school year. The purpose of the visits is to support Edge in its grant applications under School Improvement. This includes progress towards the SMART goals and Action Steps written into this school year's Integrated Action Plan and School Improvement Grants.

While at each campus, Mr. Rausch conducted classroom observations, facilitated focus groups with students and then with staff, and met with school leadership regarding the grant application for next school year.

Mr. Rausch will send a summary of his visits to each campus detailing information gathered from the focus groups. That summary will be shared with the board and staff once it is available.

### **Stakeholder Feedback Surveys**

Part of Edge's continuous improvement involves surveying all stakeholders at Edge. In mid-February students at both campuses gave input on a Climate & Culture Survey.

Last week, the window opened for staff to give feedback on a similar Climate & Culture Survey as well as a general Staff Survey.

In the 4<sup>th</sup> quarter we will also be soliciting feedback from Support Persons (parent/guardian/positive adult supporting our students).

All survey results are anonymous and by campus. Survey results will be shared with staff and the board.

## **New Community Partnerships in the 4<sup>th</sup> Quarter**

**Tu Nudito**, will be teaching a “Growing through grief class” at Himmel Park on Wednesdays beginning in the 4<sup>th</sup> quarter. Tu Nudito is a community leader in helping individuals and families through the grief process through bi-monthly support groups. Students participating in the class will leave with a Greif Resource Toolkit to use at home.

Tu Nudito will also be facilitating a professional learning workshop for our staff on the topic of supporting students dealing with grief. This training is scheduled for Monday, March 24<sup>th</sup> from 1PM-3PM.

**Amistades**, a local non-profit committed to strengthening Arizona’s Latino community through culturally responsive services, empowerment, and sustainable, meaningful change, will be teaching a life skills-based curriculum called, ¡Cuidate!. This class aims to reduce sexual risks behaviors by focusing on HIV prevention, negotiation and refusal skills, abstinence, and condom-use, and understanding the characteristics of both healthy and unhealthy relationships. It also examines the role of social attitudes and belief around sex decisions.

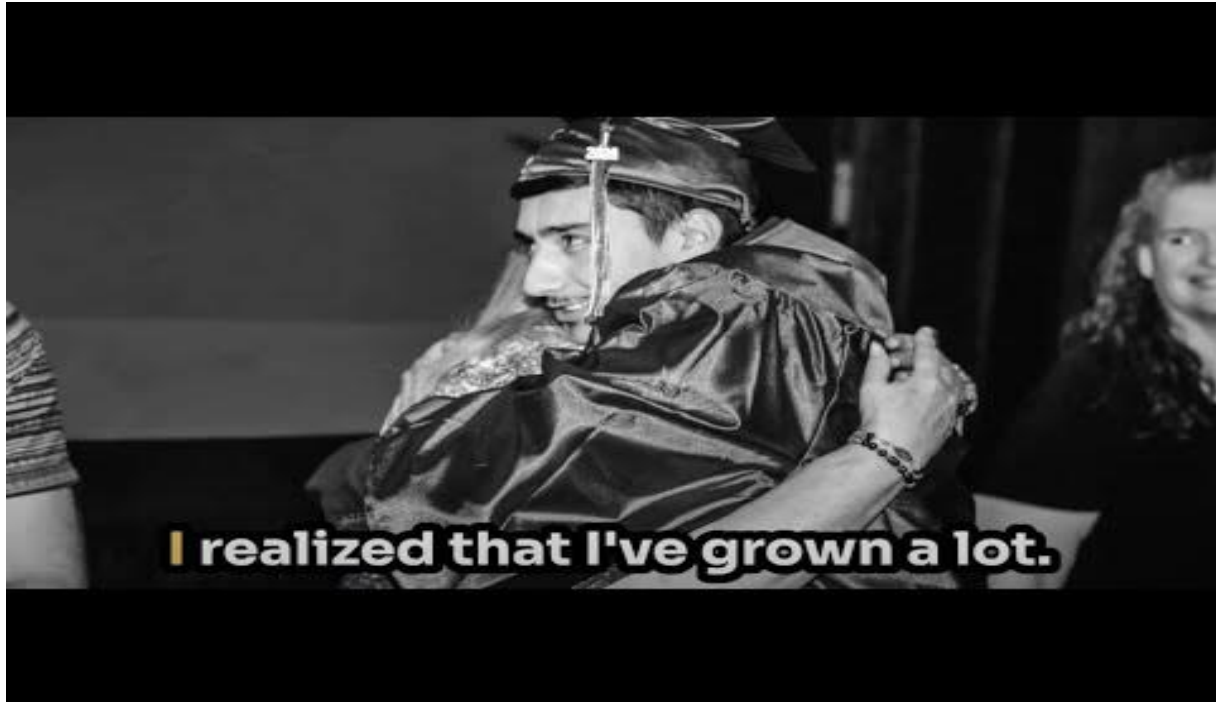
### **EDGE High School Now Has An Official Mascot**

Did you know that EDGE High School has never had an official mascot? In the recent weeks, the student body at both Edge campuses were surveyed to generate suggestions for possible mascots. The most frequently suggested mascot ideas were then moved forward to a second survey that was open to both students and staff. Our official mascot is now the Edge Raptors.

### **Upcoming Ways To Support Edge**

- If you learn about grant opportunities, please let Edge administration know.
- Encourage family and friends to donate towards a School Tax Credit to Edge.
- If you have people in your personal or professional networks who might connect with Edge’s mission and vision and might have the capacity to give, please make an introduction.
- Forward the video below to those in your network:

<https://www.youtube.com/watch?v=FAXaKI5Xx3U>



- Participate in professional learning with our staff and/or eat lunch with staff on our Professional Learning Day on Monday, March 24<sup>th</sup> from 8AM-3PM at Edge Himmel Park.
- Participate in 3<sup>rd</sup> Quarter Honor's Assembly on Friday, April 4<sup>th</sup> from 12PM-12:30PM
- Help sell tickets to, and attend, The Taste of Oro Valley on Sunday, April 13<sup>th</sup> from 3:30-6:30PM @ Steam Pump Ranch
- Participate in a focus group with Cognia (our accreditation body) on April 22<sup>nd</sup>.
- Help plan Teacher Appreciation Week (May 5<sup>th</sup>-9<sup>th</sup>)
- Help plan, fundraise, decorate for Edge's Prom (May 10<sup>th</sup>)