

**Edge Himmel Park**  
**Administrator's Report**  
**April 15th, 2025**

**Current Enrollment**

Himmel Park: 71 (+3 since last month)

- 4 new students have started since last month
- 2 students scheduled to start this week
- 2 graduated this month students at risk of being withdrawn for 10 consecutive absences
- 2 students at risk of being 10 day withdrawals this week

Northwest: 55

Total: 126

\*The FY25 Budget is written with an Average Daily Membership (ADM) of 170

**Enrollment and Recruitment Efforts**

- **Reviewing lists of withdrawn students and contacting them**
- **Pre-registration for next year underway for current Edge students**
- **Actively encouraging current students to refer their friends and family**
- **Open Houses scheduled for the first Tuesday of every month from 5PM-7PM at Edge Himmel Park**
- **Piloting a new structure of greater support and accountability regarding distance learning the 4<sup>th</sup> quarter.**
- **Proactively engaging middle schools, especially K-8 charter schools.**
- **Email and newsletter campaigns geared towards traditional district school's counseling department as well as other non-profits that support marginalized youth.**
- **Tabling opportunity at The Taste Of Oro Valley on Sunday, April 13<sup>th</sup>**
- Edge flyers posted at Lapan College & Career Club
- Edge flyers posted at Live Theatre Workshop
- Edge flyers available at Stand Up For Kids Tucson
- Edge flyers posted at Sporting Chance
- Edge flyers and print materials posted at 4 Boys & Girls Clubhouses
- Edge flyers and print materials are available at EON Youth Lounge on 4th Avenue, operated by Southern Arizona AIDS Foundation.

- Edge flyers and print materials are available at El Rio Community Health Centers.
- Edge flyers are available at Himmel Park and Woods Libraries

### **Edge High School & The Charter School Movement Turn 30 This Summer!**

Did you know the charter school legislation became law in 1995! Edge High School was one of the first 10 charter schools in Arizona to open that year. Today, there are over 580 charter schools in Arizona serving nearly 272,000 Arizona youth. Charter school students make up approximately 21% of public-school enrollment in Arizona.

To celebrate the innovation and longevity of Edge High School and other original Southern Arizona Charters Schools including PPEP Tech and Presidio High Schools, the Arizona Charter School Association is hosting a 30 Years Of Charter School Celebration Reception on Wednesday, April 16<sup>th</sup> from 4:00-7:00PM at Corbett's on 6<sup>th</sup> Avenue. Please let Rob know if you'd like to attend.

### **Arizona Department of Education Site Visit To Both Himmel Park and Northwest**

On Friday, April 4<sup>th</sup>, Ken Rausch, Support & Innovation Specialist with the Arizona Department of Education visited both Edge Himmel Park and Edge Northwest. The visit was the third of four total visits that will occur before the end of the school year. The purpose of the visits is to support Edge in its grant applications under School Improvement. This includes progress towards the SMART goals and Action Steps written into this school year's Integrated Action Plan and School Improvement Grants.

While at each campus, Mr. Rausch met with campus leadership and reviewed progress towards school improvement SMART goals and actions steps. In addition, he previewed grant opportunities for next school year and dialogued with leadership around next year's Integrated Action Plan. Edge learned from Mr. Rausch that next year's School Improvement Grants have been reduced to \$15,000 per campus. This year, Himmel Park received \$55,000 while Northwest received \$52,000.

Mr. Rausch will send a summary of his visits to each campus detailing the information gathered. That summary will be shared with the board and staff once it is available. Mr. Rausch will conduct his final site visit at Edge' campuses on Friday, May 16<sup>th</sup>.

### **Progress On This Year's Integrated Action Plan Goals**

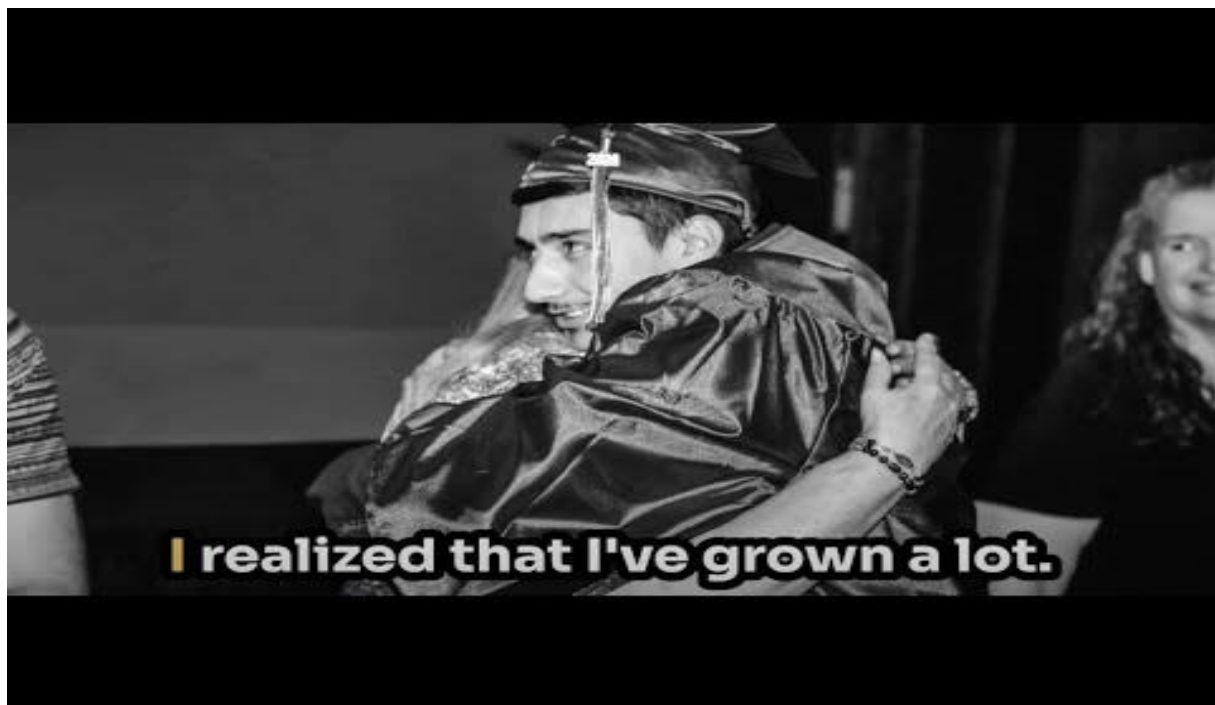
Both campuses recently evaluated 3<sup>rd</sup> Quarter data and conducted an analysis of school progress towards this year's Integrated Action Plan and associated SMART Goals.

\*Please see Board Materials on Edge's website for a summary of each campus's progress.

### **Upcoming Ways To Support Edge**

- If you learn about grant opportunities, please let Edge administration know.
- Encourage family and friends to donate towards a School Tax Credit to Edge.
- If you have people in your personal or professional networks who might connect with Edge's mission and vision and might have the capacity to give, please make an introduction.
- Forward the video below to those in your network:

<https://www.youtube.com/watch?v=FAXaKI5Xx3U>



- Celebrate 30 years of Charter Schools in Arizona by attending the Arizona Charter School Association's 30<sup>th</sup> Anniversary Reception on Wednesday, April 16<sup>th</sup> from 4PM-7PM at Corbett's on 6<sup>th</sup> Avenue.
- Participate in a focus group with Cognia (our accreditation body) on April 22<sup>nd</sup>.

- Help plan Teacher Appreciation Week (May 5<sup>th</sup>-9<sup>th</sup>)
- Help plan, fundraise, decorate for Edge's Prom (May 10<sup>th</sup>)
- Participate in Senior Luncheon for Himmel Park seniors on Wednesday, May 14<sup>th</sup> from 12:30-1:30PM.
- Attend Edge's Commencement Ceremony on Thursday, May 22<sup>nd</sup> at 7PM at the Leo Rich Theatre at the Tucson Convention Center.